



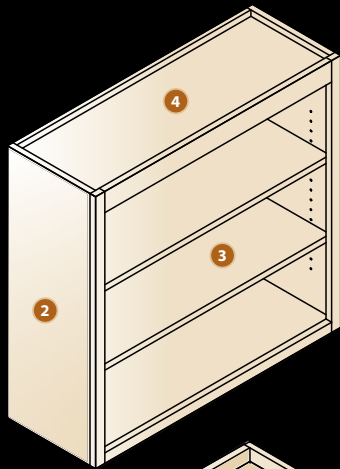
# KEYLINE

by CRYSTAL

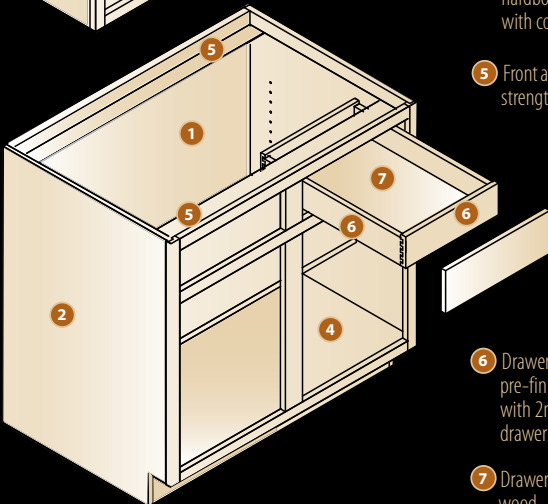
Keyline, Crystal's exciting, framed cabinet collection was created by grouping many of Crystal's most popular door styles, woods, finishes, and sought-after custom design elements.

By simplifying the choices, we are able to offer affordable high-quality cabinetry with distinct appearance and custom appeal. Keyline cabinetry has versatility and functionality with each cabinet built just for you. Best of all, Keyline gives you the style and details you want at an economical price. Keyline cabinetry is supported with our Five Year Limited Warranty and the finest service in the industry.

## Keyline Box Construction



- 1 Wood grain pattern interior simulates maple wood with clear finish.
- 2 Finished ends are 3/4" thick particleboard sides. Unfinished ends are 1/2" thick particleboard sides.
- 3 Shelves are wood grain melamine on 3/4" particleboard substrate, wood grain PVC on front edge.
- 4 Tops and bottoms are 1/2" particleboard substrate with wood grain melamine interior. Backs are 1/8" hardboard wood grain foil interior with concealed hanging rails.



- 5 Front and back stretchers for support, strength and easy installation.
- 6 Drawer sides, front and back are 5/8" pre-finished Baltic birch dovetail with 2mm wood grain PVC on top of drawer sides.
- 7 Drawer bottom is 1/4" pre-finished wood grain plywood and is daddoed into sides and front for greater strength.

## Drawer Guides

- 8 Concealed 3/4 extension under-mount guides. Concealed full-extension under-mount guides available as upgrade.
- 9 Blumotion® Soft Close feature available as upgrade on full-extension drawers.
- 10 Roller carriage mechanism is self lubricating.

## 30 PLUS STANDARD DOOR STYLES



Keyline doors are 3/4" solid wood frames. Mortis and tenon or mitered doors have 3/4" solid wood raised panel or 1/2" solid wood flat panel. Choose from styles ranging from transitional, Arts & Crafts, Shaker, English Cottage, Country French to Rustic Country and Traditional.

## 11 STAINS • 3 PAINT COLORS



Keyline stains and paints are available in an assortment of popular tones and colors. Keyline's Signature finish offers two colors of highlights and several distressing elements to enhance your stain or paint. Utilizing innovative and progressive finish technology, Keyline's multi-step finish application produces a strong, long-lasting product.

## 5 WOODS



Keyline offers maple, knotty alder, cherry, hickory and red oak. Keyline's premium wood choices will help you create your vision of the perfect kitchen or bath.

